



YOSHIMURA

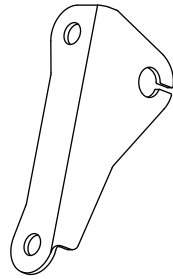
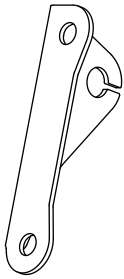
RESEARCH&DEVELOPMENT OF AMERICA, INC.

5420 DANIELS STREET STE A, CHINO CALIF. 91710 · (800) 634-9166 · (909) 628-4722 · FAX (909) 591-2198

www.yoshimura-rd.com

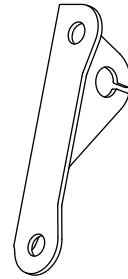
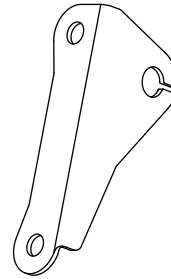
Universal Turn Signal Bracket Kit

070BGUNVTBKT



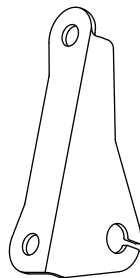
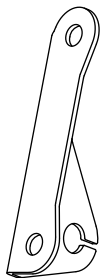
Up & Out

Turn signal mounted high and wide.



Up & In

Turn signal mounted high and narrow.



Down & Out

Turn signal mounted low and wide.



Down & In

Turn signal mounted low and narrow.

The Yoshimura Universal Turn Signal Brackets are to be used with aftermarket turn signals and can be installed using four different configurations. To prevent damage to turn signals, verify that the exhaust gases are not directed toward the turn signals. Yoshimura R&D of America, Inc. is not liable or responsible for any resulting event caused by the installation of this product. Check with local laws and regulations for compliance prior to installation and use.

● Thank you for purchasing **LED flash relay**. Before installing, please check the instruction carefully.

Notice

- For installation, please follow the steps described in manual. Any damage caused by wrong installation shall be imputed to the users.
- To avoid the short circuit, please don't pull the wires when installing. Don't break or modify the wire terminal.
- Do not disassemble or change any parts excluding the manual description.
- The interior examination or maintenance should be executed by our professionals.

MARK MEANING:

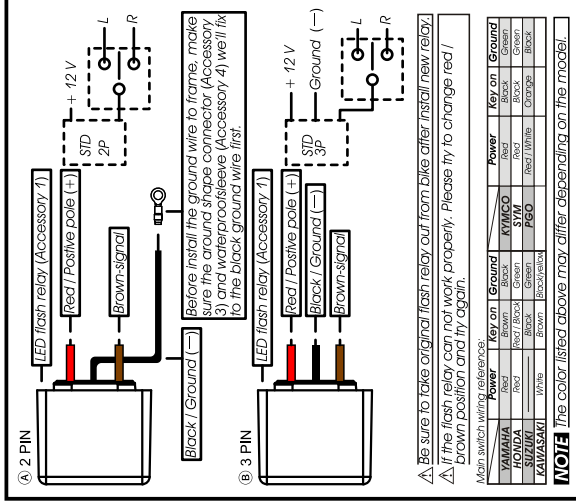
- NOTE** You could get the installation detail from the information behind the mark.
- A** Some processes must be followed to avoid the affection caused by wrong installation.
- WARNING!** Some processes must be followed to avoid damages to yourself or the public.
- CAUTION!** Some processes must be followed to avoid the damage to the vehicle.

1 Accessory

- 1** LED (red) relay X1
- 2** Rubber Pads X1
- 3** Round spacer connectors X1
- 4** Terminal cover (red) X1

NOTE Please contact the local distributor if the items you open are not the same, with the above-listed one.

2 Wiring installation instructions



A Be sure to take original flash relay out from bike after install new relay.
△ If the flash relay can not work properly, please try to change red / brown position and try again.

Main switch wiring reference:

	Power	Key on	Ground	KEY/CO	KEY/PO	Power	Key on	Ground
HONDA	Red	Black	Green	SYM	Red	Black	Black	Green
YAMAHA	Red	Black	Green	SYM	Red	Black	Black	Green
SUZUKI	White	Brown	Black	PGO	Red / Yellow	Orange	Black	Black
KAWASAKI	White	Brown	Black	PGO	Red / Yellow	Orange	Black	Black

NOTE The color listed above may differ depending on the model.

WH006K005a



RESEARCH&DEVELOPMENT OF AMERICA, INC.

5420 DANIELS STREET STE A, CHINO CALIF. 91710 (800) 634-9166 (909) 628-4722 FAX (909) 591-2188

www.yoshimura-rd.com

Butt Connector Installation:

1. Strip wire ends 1/4" - 1/2" and insert into **BN-SSS-22-18**, butt connectors.
2. Center the spliced wire ends in the middle and using a heatgun or lighter, apply heat evenly on the outer edges of the butt connector to shrink and hold wires in place.
3. Making sure that the stripped ends are centered, heat the center of the butt connector evenly until the solder begins to liquify.
4. Allow to cool completely and tug both ends of the wires to verify that connection is secured.

Scan for link to butt connector instruction video.



1. Remove the stock turn signals.

2. Cut the stock turn signal wires on the harness side 2" behind the stock connector.

3. Strip wire ends 1/4" - 1/2" and determine positive (+) and negative (-) wires by temporarily connecting to Yoshimura turn signal.

4. Crimp the loose bullet connectors to harness wires accordingly.

5. Re-install and re-connect turn signal and check for proper function.

