



# YOSHIMURA

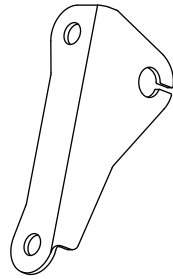
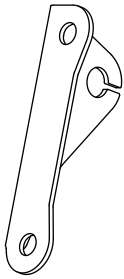
RESEARCH&DEVELOPMENT OF AMERICA, INC.

5420 DANIELS STREET STE A, CHINO CALIF. 91710 · (800) 634-9166 · (909) 628-4722 · FAX (909) 591-2198

[www.yoshimura-rd.com](http://www.yoshimura-rd.com)

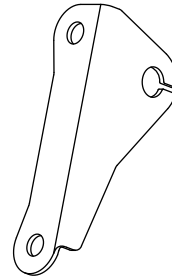
## ***Universal Turn Signal Bracket Kit***

### ***070BGUNVTBKT***



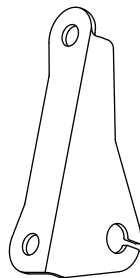
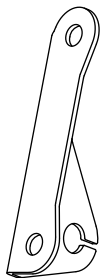
#### **Up & Out**

Turn signal mounted high and wide.



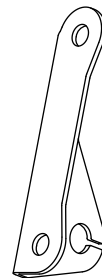
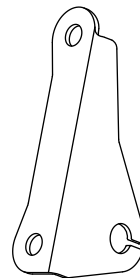
#### **Up & In**

Turn signal mounted high and narrow.



#### **Down & Out**

Turn signal mounted low and wide.



#### **Down & In**

Turn signal mounted low and narrow.

The Yoshimura Universal Turn Signal Brackets are to be used with aftermarket turn signals and can be installed using four different configurations. To prevent damage to turn signals, verify that the exhaust gases are not directed toward the turn signals. Yoshimura R&D of America, Inc. is not liable or responsible for any resulting event caused by the installation of this product. Check with local laws and regulations for compliance prior to installation and use.

● Thank you for purchasing **LED flash relay**. Before installing, please check the instruction carefully.

**Notice**

- For installation, please follow the steps described in manual. Any damage caused by wrong installation shall be imputed to the users.
- To avoid the short circuit, please don't pull the wires when installing. Don't break or modify the wire terminal.
- Do not disassemble or change any parts excluding the manual description.
- The interior examination or maintenance should be executed by our professionals.

**MARK MEANING:**

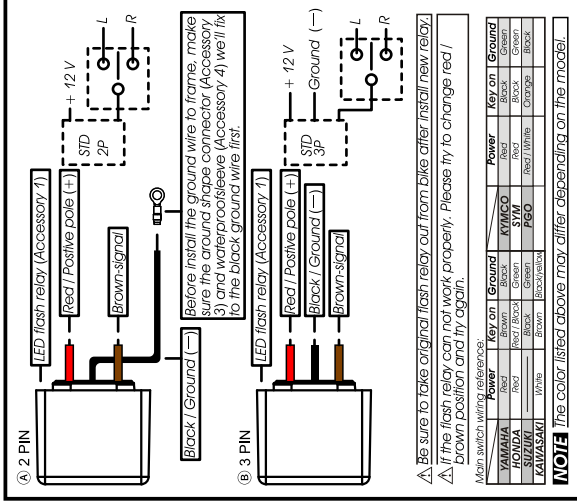
- NOTE** You could get the restoration detail from the information behind the mark.
- A** Some processes must be followed to avoid the affection caused by wrong installation.
- WARNING!** Some processes must be followed to avoid damages to yourself or the public.
- CAUTION!** Some processes must be followed to avoid the damage to the vehicle.

**1 Accessory**

- 1** LED flash relay X1
- 2** Washer X1
- 3** Round spacer connector X1
- 4** Terminal cover X1

**NOTE** Please contact the local distributor if the items you open are not the same with the above-listed one.

**2 Wiring installation instructions**



**A** Be sure to take original flash relay out from bike after install new relay.  
**△** If the flash relay can not work properly, please try to change red / brown position and try again.

Main switch wiring reference:

Power	Key on	Ground	Key on	Ground
YAMAHA	Red	Black	Red	Black
HONDA	Red	Black	Red	Black
SUZUKI	White	Brown	Red	Black
KAWASAKI	White	Brown	Red	Black

**NOTE** The color listed above may differ depending on the model.

WH006K005a



RESEARCH&DEVELOPMENT OF AMERICA, INC.

5420 DANIELS STREET STE A, CHINO CALIF. 91710 (800) 634-9166 (909) 628-4722 FAX (909) 591-2198

[www.yoshimura-rd.com](http://www.yoshimura-rd.com)

**Butt Connector Installation:**

1. Strip wire ends 1/4" - 1/2" and insert into BN-SSS-22-18, butt connectors.
2. Center the spliced wire ends in the middle and using a heatgun or lighter, apply heat evenly on the outer edges of the butt connector to shrink and hold wires in place.
3. Making sure that the stripped ends are centered, heat the center of the butt connector evenly until the solder begins to liquify.
4. Allow to cool completely and tug both ends of the wires to verify that connection is secured.

Scan for link to butt connector instruction video.



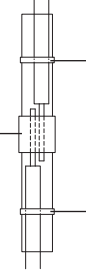
RESEARCH&DEVELOPMENT OF AMERICA, INC.

5420 DANIELS STREET STE A, CHINO CALIF. 91710 (800) 634-9166 (909) 628-4722 FAX (909) 591-2198

[www.yoshimura-rd.com](http://www.yoshimura-rd.com)

1. Remove the stock turn signals.
2. In order to reuse the stock turn signal connector, cut the stock turn signal wires as close to the bulb as possible.
3. Strip wire ends 1/4" - 1/2".
4. Reconnect turn signal connector and test to determine positive (+) and negative (-) wires on the stock turn signal wires.
5. Install supplied butt connectors following instructions on reverse side of sheet. Be sure to slide wires through washer and nut before installing butt connectors.
6. Re-install and re-connect turn signal and check for proper function.

Solder Ball



Wire Grip Rings

Strip Ends  
1/4" - 1/2"

