



YOSHIMURA

RESEARCH & DEVELOPMENT OF AMERICA, INC.

5420 DANIELS STREET STE A, CHINO CA. 91710 · (800)634-9166 · (909)628-4722 · FACSIMILE (909)591-2198

www.yoshimura-rd.com

TRCD TRI-OVAL PERFORMANCE EXHAUST SYSTEM

**2009-2012
YAMAHA
YZF-R1**

1314212	STAINLESS STEEL RACE SLIP-ON W/ CARBON FIBER TRCD
1314215	STAINLESS STEEL RACE SLIP-ON W/ STAINLESS TRCD
1314217	STAINLESS STEEL RACE SLIP-ON W/ TITANIUM TRCD



THIS PRODUCT IS DESIGNED FOR USE IN CLOSED COURSE RACING AND IS NOT INTENDED FOR HIGHWAY USE.



NOTE: IN THE STATE OF CALIFORNIA, IT IS ILLEGAL TO MODIFY THE EMISSION CONTROL SYSTEM, WHICH INCLUDES THE FUEL INJECTION OF ANY VEHICLE.

Caution: Exhaust system can be extremely hot. Let motorcycle cool down before beginning installation. Always wear hand and eye protection and take precautionary measures to avoid injury.

Note: Read through all instructions before beginning installation.

Tools Needed:

10mm and 12mm Sockets	Torque Wrench
3/8" Ratchet and Extension	3/16" Drill Bit
3mm and 4mm Allen Wrench	Electric Drill
#2 Phillips Screwdriver	Safety Glasses

Installation Steps:

1. Remove passenger seat.
2. Remove driver seat.
3. Remove upper portion of rear tail. (See Fig. 1 & 2)
 - Remove 2 front plastic screw type rivets. (Fig. 1)
 - Remove bolt. (Fig. 1)
 - Remove push type rivet. (Fig. 2)
 - Remove passenger seat lock cable.
 - Remove tailpiece.
4. Loosen tailpipe clamps. (Fig. 3)
5. Remove left and right muffler heatshields. (Fig. 4)
6. Remove left muffler mount bolt then remove muffler. Repeat for right muffler. (Fig. 5)



Fig. 2

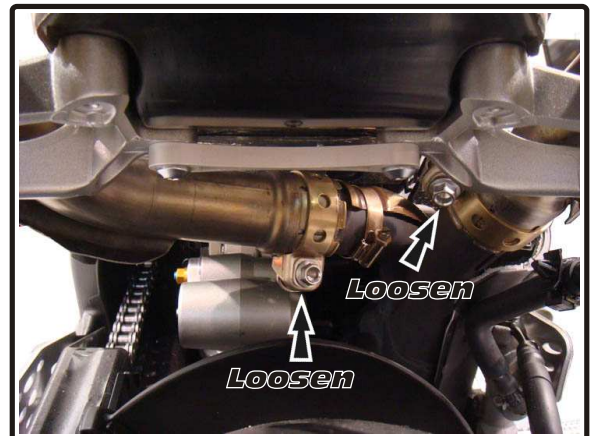


Fig. 3

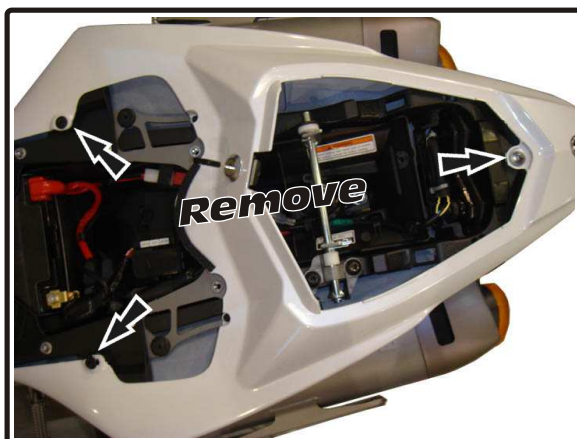


Fig. 1



Fig. 4

7. Install Yoshimura collector clamp onto left Yoshimura tailpipe/muffler assembly.
8. Install left Yoshimura muffler assembly. Using supplied bolt, tighten hand-tight. (Fig. 6)
9. Repeat steps for right Yoshimura muffler assembly.
10. Stand to the rear of the motorcycle and adjust mufflers and/or tailpipes to achieve desired fit, while checking all clearances.

Note: If insufficient clearances are found between bodywork and heatshields or tailpipes, loosen the midpipe clamp between the header and midpipe and adjust the orientation of the stock midpipe. Be sure to tighten the midpipe once orientation is set correctly.

11. Torque muffler mounting bolts to 16.5 lb-ft (2.3 kg-m)
12. Torque collector clamps to 16.5 lb-ft (2.3 kg-m)
13. Install left and right Yoshimura heatshields using supplied bolts. (Fig. 7)
14. Install tail fairing and seats using the reverse steps of removal.
15. It is recommended that the entire exhaust system be wiped down with rubbing alcohol to remove oil and fingerprints. This will help prevent tarnishing of the finish after the exhaust is heated up.
16. Before starting motorcycle, check for proper clearance between new exhaust system and motorcycle (i.e. Bodywork, swing-arm, etc.). If any problem is found, please carefully follow through the installation steps again. If problem still persists, please call Yoshimura tech. dept. at (800)634-9166 / in CA (909)628-4722

NOTE: After starting motorcycle, it is normal for new exhaust system and mufflers to emit smoke until oil residue burns off.

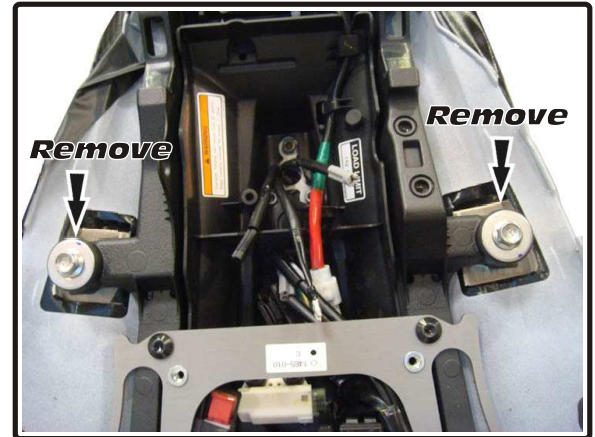


Fig. 5

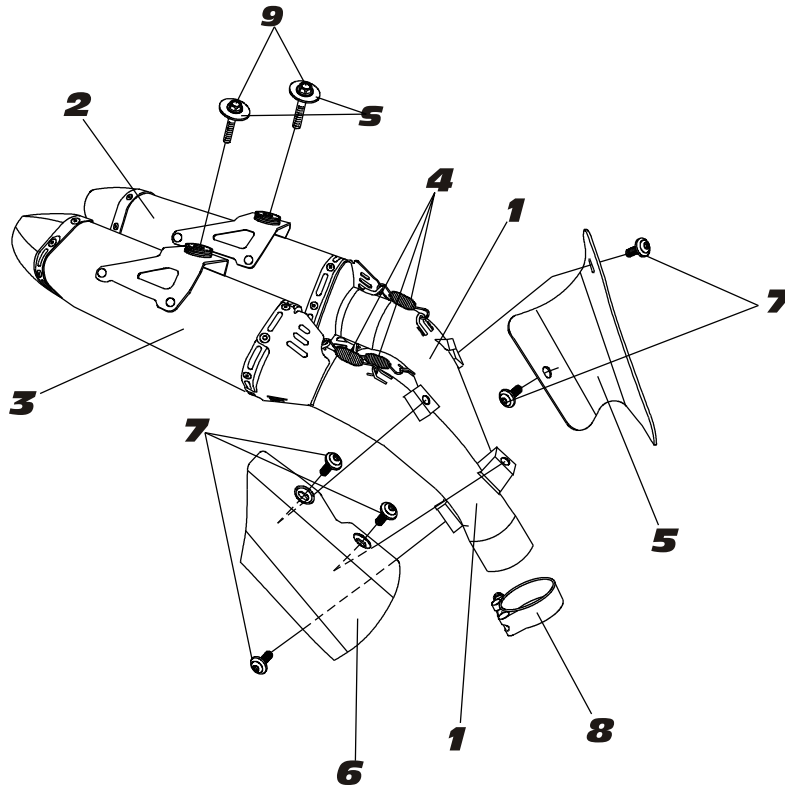


Fig. 6



Fig. 7

#131421(2,5,7)



S=STOCK

Parts Diagram

NO.	DESCRIPTION	QTY	PART #
1	Yoshimura Tail Pipe		
	Stainless Steel (Left Side)	1	1314-426
	Stainless Steel (Right Side)	1	1314-427
2	Muffler (Left)	1	
	TRCD Muffler with Carbon Fiber Sleeve		1314212-LMA
	TRCD Muffler with Stainless Steel Sleeve		1314215-LMA
	TRCD Muffler with Titanium Sleeve		1314217-LMA
3	Muffler (Right)	1	
	TRCD Muffler with Carbon Fiber Sleeve		1314212-RMA
	TRCD Muffler with Stainless Steel Sleeve		1314215-RMA
	TRCD Muffler with Titanium Sleeve		1314217-RMA
4	Small Exhaust Spring	4	RACE-SPX-1
5	Left Heatshield	1	1314-HSL
6	Right Heatshield	1	1314-HSR
7	Heatshield Bolts	5	RC116HSB-BK
8	Collector Clamp	2	22059
9	8mm X 55mm Flanged Hex Head Bolt	2	M8X55H
**	Exhaust Spring Puller	1	ST-200
**	Yoshimura Sticker Kit Sheet	1	17029