



YOSHIMURA

RESEARCH & DEVELOPMENT OF AMERICA, INC.

5420 DANIELS STREET STE A, CHINO CA., 91710 · (800) 634-9166 · (909) 628-4722 · FAX (909) 591-2198

www.yoshimura-rd.com

Street Series

Qualified Manufacturer Declared "Replacement Part"

2000~2020
SUZUKI DR-Z400 S/SM

216600C250 (SS/CF)

216600C350 (SS/AL)

RS-2 Stainless Steel Full-System



All Street Series systems are:

- Slip-on/Bolt-on applications that do not require tampering with the vehicle's emissions control system.
- CARB/EPA tail-pipe emissions compliant.
- Marked with appropriate EPA noise labels.
- Not tested for EPA new vehicle noise compliance.

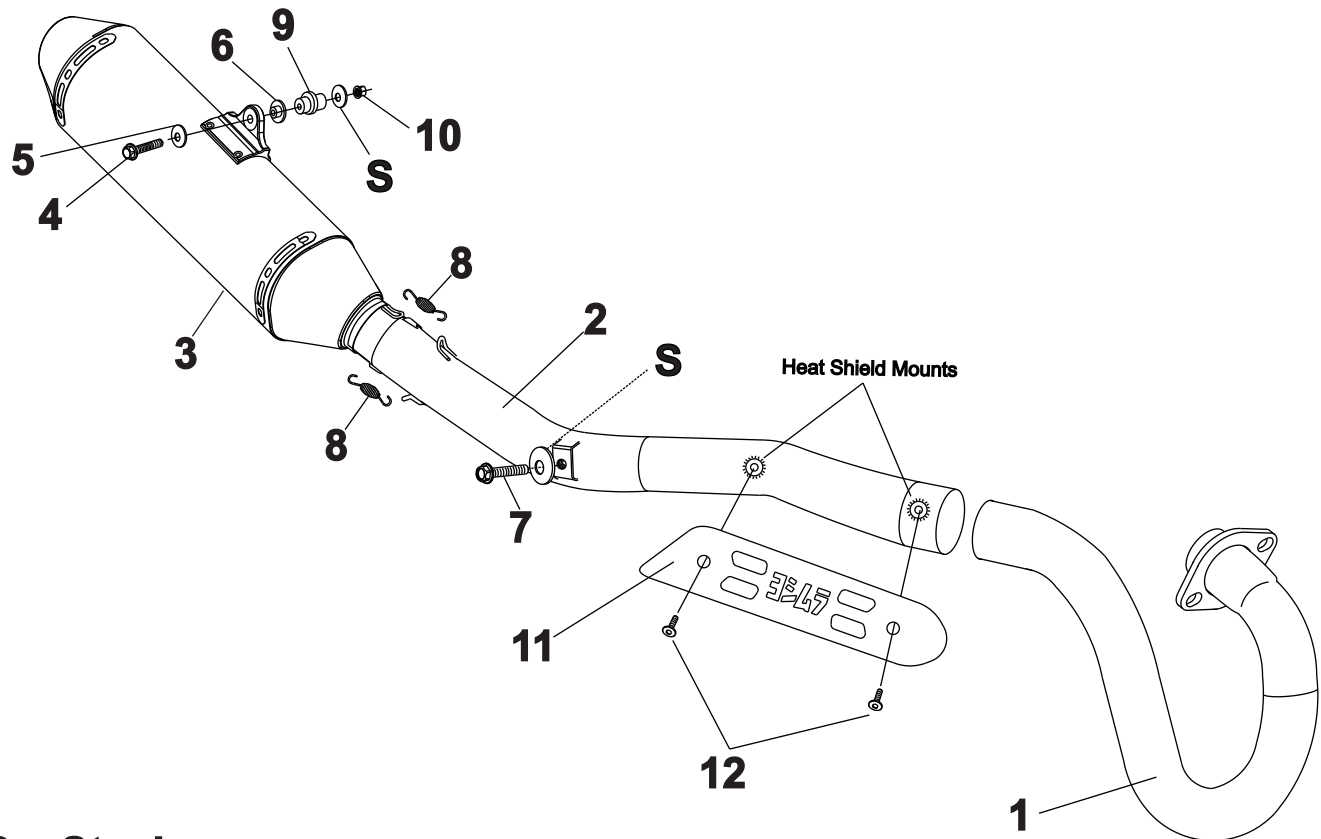


You must know how to remove and replace your stock exhaust in order to install this product otherwise have it installed by a professional mechanic. Keep all stock parts from your existing system as some components may be necessary to install your new Yoshimura exhaust depending on the application. Read through all instructions before beginning installation. Exhaust system can be extremely hot. Let motorcycle cool down before beginning installation. Always wear hand and eye protection and take precautionary measures to avoid injury.



NOTE: IN THE STATE OF CALIFORNIA, IT IS ILLEGAL TO MODIFY THE EMISSION CONTROL SYSTEM, WHICH INCLUDES THE CARBURETORS OF ANY VEHICLE.

Assembly Diagram



S = Stock

NO.	DESCRIPTION	QTY	PART #
1	Yoshimura Header Stainless Steel	1	21660-101
2	Yoshimura Tailpipe Stainless Steel	1	2166-144
3	Muffler Assembly RS2 Muffler with Carbon Fiber Sleeve RS2 Muffler with Aluminum Sleeve	1	216600C250-RMA 216600C350-RMA
4	8mm x 60mm Socket Head Bolt	1	M8X60H
5	Large Washer	1	8MMWASHERL
6	Aluminum Insert	1	ALS-003
7	8mm x 30mm Flange Hex Bolt	1	M8X30H
8	Medium Exhaust Springs	2	RACE-SPS-1
9	Muffler Mount Spacer	1	2166-SPCR
10	8mm Flange Nut	1	8MMNUT
11	Yoshimura Heatshield	1	2165-HS
12	6x8mm Button Head Flange Screw	2	RC116HSB
**	Offroad Endcap Plug	1	347PLUG
**	Spring Puller Tool	1	ST-200
**	Rubber Grommet	1	Z1022
**	Yoshimura Vinyl Sticker	1	17100

Installation Procedures:

Caution: Exhaust system can be extremely hot. Let motorcycle cool down before beginning installation.

Note: Read through all instructions before beginning installation.

Tools Needed:

Metric socket set
3/8" ratchet and extension
Allen bit set for torque wrench
Torque wrench

Installation Steps:

1. Remove right rear number plate (see Fig. 1).
2. Remove stock exhaust system and stock exhaust port gasket. Note: Remove stock rubber grommet from muffler mount.
3. The stock exhaust port gasket will be re-used with the Yoshimura full-system. Inspect and replace if necessary.
4. Install Yoshimura header using stock header nuts. Do not torque at this point.
5. Install muffler and tail-pipe onto header.
6. Bolt tail-pipe to stock chassis mount using supplied bolt (see Fig. 2). Do not torque bolt at this point.
7. Mount muffler to stock muffler mount location using a combination of stock hardware and supplied bolt, washers, and aluminum spacer (see Fig. 3 and Parts Diagram for orientation).



Fig. 1

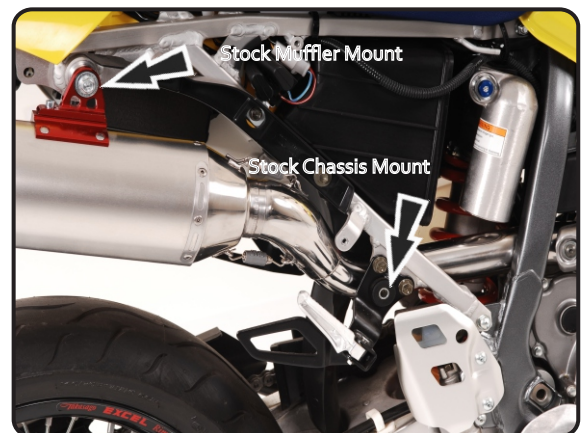


Fig. 2

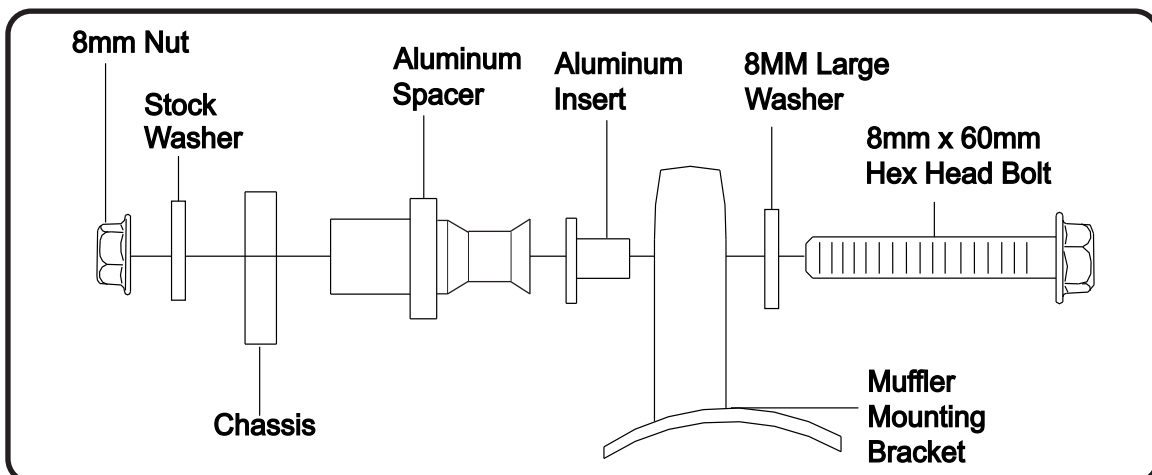


Fig. 3

Installation Procedures:

8. *Torque chassis mount bolt and muffler mount bolt to factory specifications.*
9. *Torque header nuts to factory specifications.*
10. *Install Yoshimura heat shield onto Yoshimura tailpipe using supplied heatshield bolts.*
11. *It is recommended that the entire exhaust system be wiped down with rubbing alcohol to remove oil and fingerprints. This will help prevent tarnishing of the finish after the exhaust is heated up.*
12. *Before starting motorcycle check for proper clearance between new exhaust system and rear suspension (i.e. rear brake, frame, shock spring, etc). If any problem is found, please carefully follow through the installation steps again. If problem still persists, please call Yoshimura technical department at (800)634-9166 / in CA (909) 628-4722 .*
13. *Re-install number plate.*
14. *Check for proper clearance between new exhaust system and number plate.*

Note: After starting motorcycle, it is normal for new exhaust system to smoke until oil residue burns off.



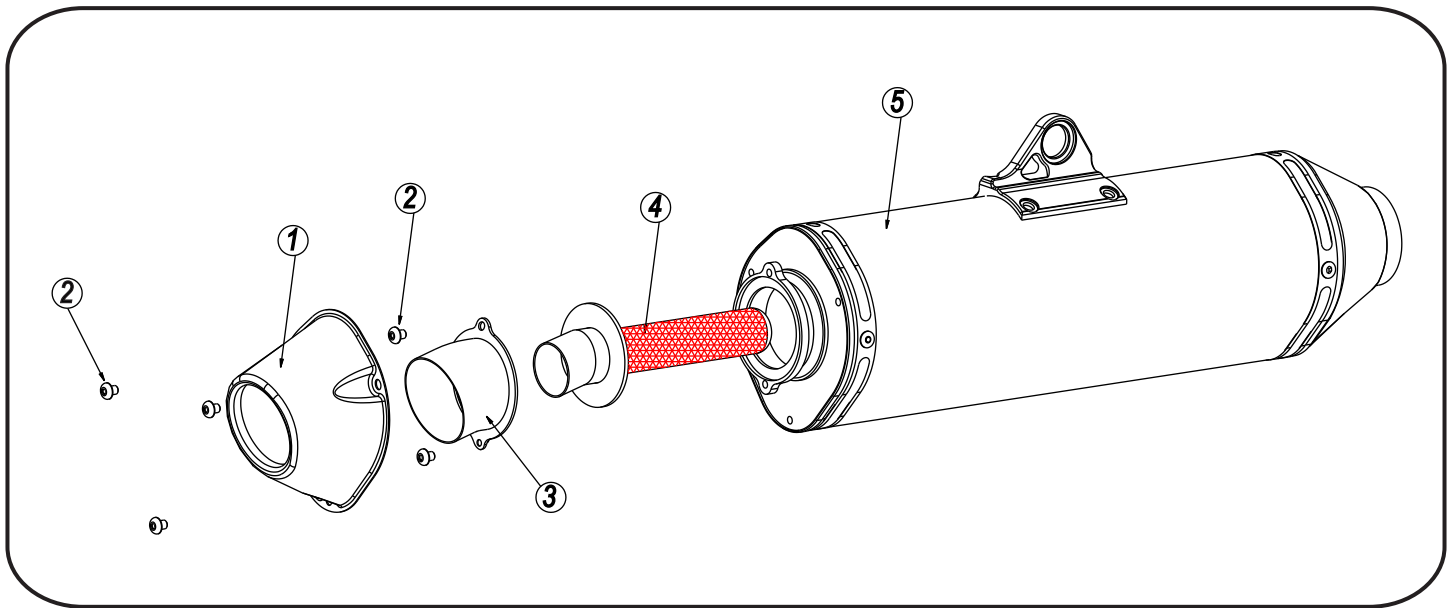
YOSHIMURA

RESEARCH & DEVELOPMENT OF AMERICA, INC.

5420 DANIELS STREET SUITE A, CHINO, CA 91710 · (800)634-9166 · (909)628-4722 · FACSIMILE (909)591-2198

www.yoshimura-rd.com

Spark Arrester Cleaning Information



Parts Diagram

Caution: *Muffler can be extremely hot. Let muffler cool down before removing spark arrester.*

Note: *Read through all instructions before beginning disassembly.*

NO.	DESCRIPTION	QTY
1	Cone Cap	1
2	5mm x 10mm Button Head Bolt	5
3	Exhaust Tip	1
4	Spark Arrester	1
5	Muffler Assembly	1

Tools Needed:

- 3mm Allen Key
- Wire Brush
- Pair of Gloves
- Safety Glasses

- Using a wire brush, remove carbon deposits from spark arrester screen. Inspect the screen for excessive wear or damage. If spark arrester is excessively worn or damaged, the spark arrester must be replaced. Cleaning and inspection should be performed after every 60 hours of use.

CAUTION: *Gloves and Safety Glasses should be worn while cleaning spark arrester.*

Cleaning Steps:

- Using a 3mm Allen key, remove the three 5mm x 10mm button head bolts that secure the cone cap to the muffler (see Parts Diagram for location).
- Remove the two 5mm x 10mm button head bolts that secure the spark arrester to the muffler. Remove the spark arrester from the muffler.

- Re-install spark arrester and cone cap. Torque the 5mm x 10mm bolts to 1.0 kg-m (7.3 lb-ft).

NOTE: *It is recommended that a low strength "Loc-tite" is used on the 5mm x 10mm bolts.*