

HYPHERPRO

STEERING DAMPER MOUNTING KIT

for

Honda Monkey 125 Model 2018>

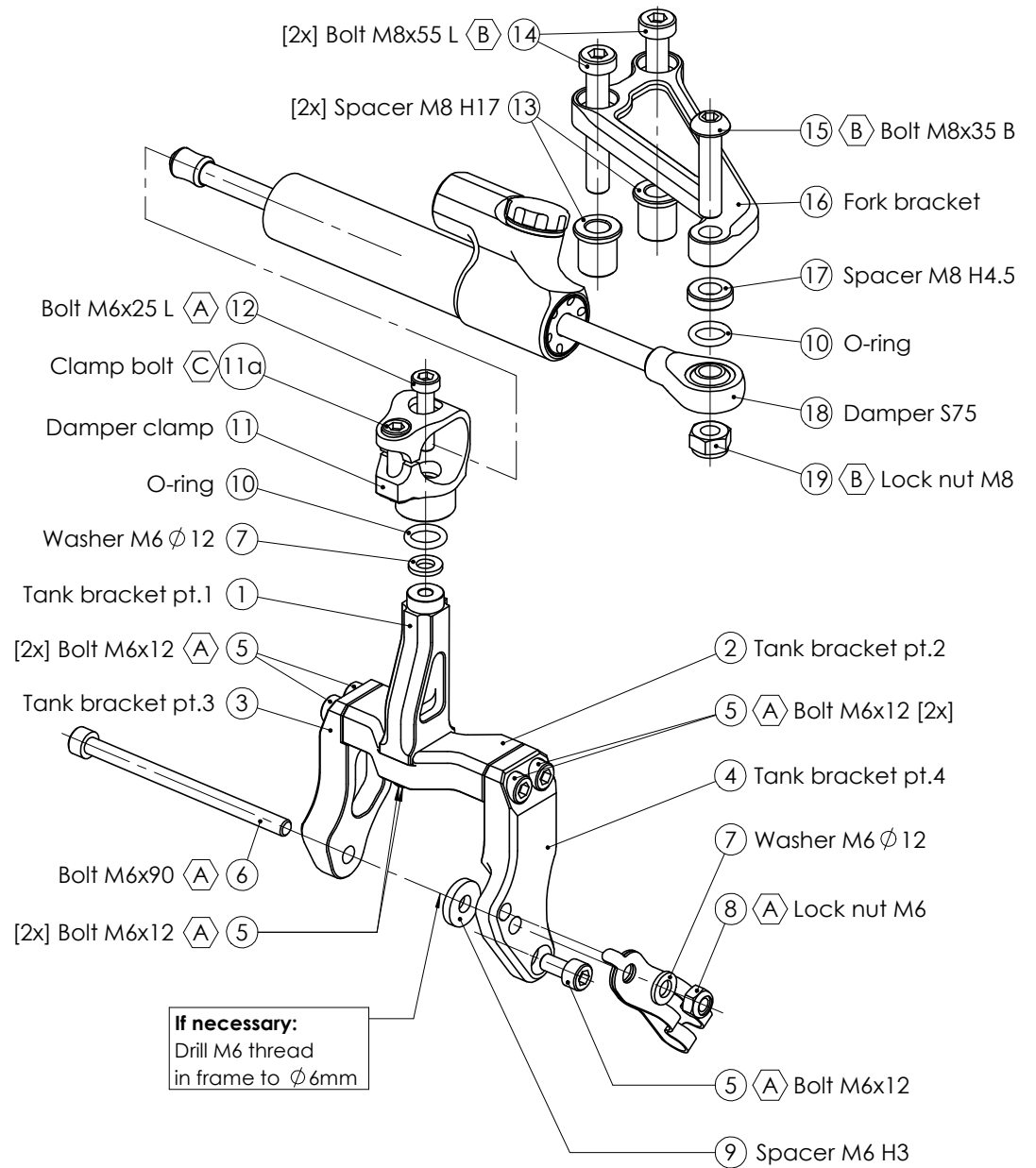
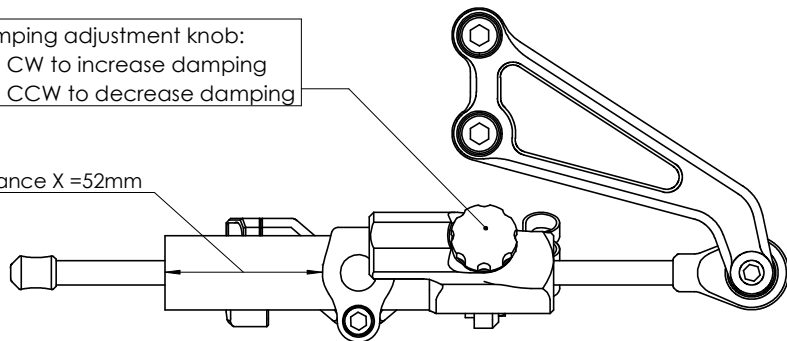
MK-H001-T003 PART LIST

SD stroke 75	1	M6x12	7
Damper Clamp [MP-DB0003]	1	M6x25 Low head	1
Fork Bracket [MP-FOMK101]	1	M6x90	1
Tank Bracket [MP-TAMK88-1]	1	M8x35 Button head	1
Tank Bracket [MP-TAMK88-2]	1	M8x55 Low head	2
Tank Bracket [MP-TAMK88-3]	1	Lock nut M6	1
Tank Bracket [MP-TAMK88-4]	1	Lock nut M8	1
Spacer M6 3mm [MP-SP061803]	1	Washer M6 ϕ 12	2
Spacer M8 4.5mm [MP-SP0816045]	1	O-ring	2
Spacer M8 17mm [MP-SP0028]	2	-	-

ALL IDEAS, DESIGNS ARRANGEMENTS AND PLANS INDICATED OR REPRESENTED BY THIS DRAWING ARE OWNED BY HYPERPRO AND WERE CREATED, EVOLVED AND DEVELOPED FOR USE ON AND IN CONNECTION WITH THE SPECIFIC PROJECT. NONE SUCH IDEAS, DESIGNS, ARRANGEMENTS OR PLANS SHALL BE USED BY OR DISCLOSED TO ANY PERSON, FIRM OR CORPORATION FOR ANY PURPOSE WHATSOEVER WITHOUT THE WRITTEN PERMISSION OF HYPERPRO.

Damping adjustment knob:
turn CW to increase damping
turn CCW to decrease damping

Distance X = 52mm



*** TORQUES**

A: 5-9Nm / 44-80Lbs.In / 4.0-6.4Lbs.Ft
 B: 14-17Nm / 124-150Lbs.In / 10.3-12.5Lbs.Ft
 C: 6Nm / 53Lbs.In / 4.4Lbs.Ft

D: 8Nm / 70Lbs.In / 5.9Lbs.Ft
 E: 55Nm / 486Lbs.In / 40Lbs.Ft
 F: Factory torque (see owners manual)

HYPERPRO

STEERING DAMPER MOUNTING KIT

for

Honda Monkey 125 Model 2018>

MK-H001-T003 INSTALLATION INSTRUCTIONS

In general:

HYPERPRO can not be held responsible in any way for any form of physical, material, financial or other damage arising from use, assembly or overhaul of HYPERPRO products. HYPERPRO reserves the right to make changes without prior notice.

This product is ONLY TO BE INSTALLED BY A PROFESSIONAL MECHANIC.

This product is only to be used for the motorcycle brand, model and year stated specifically on top of the pages of this manual.

DO NOT attempt to install this product on motorcycles from any different brand, model and/or year than stated on the pages of this manual.

DO NOT use this kit for cars, boats, jet skis, snowmobiles, ATV's, aircraft, hovercrafts or any other vehicle and/or purpose.

HYPERPRO steering dampers are FOR RACE USE ONLY, NOT FOR HIGHWAY USE!

Before installation:

- Please read the entire manual carefully before starting the installation!
- Check if you have all the tools required. Good tools are a must.
- Protect your bike at the most important places in and around the work area (e.g. tank, fairing, frame, etc.), with a blanket, towel or similar.

During installation:

- Check all operations and parts carefully before, during and after performing each step.
- Clean all surfaces that are required for fitting parts together or for applying self adhesives or loctite, thoroughly with contact cleaner or another degreaser, unless otherwise stated.
- Be carefull not to damage or scratch any part of your bike.
- ALWAYS work relaxed and concentrated!! It is very easy to damage something or make a mistake.

After installation:

- Check and make sure that there is no contact between any part of the steering damper kit and any part of the motorcycle. The kit should not hit anything. Steering movement should not be limited by the steering damper. If the steering movement is limited, adjust the position of the tube in the clamp untill steering movement is normal again. Do not forget to tighten the clamp bolt again!
- ALWAYS check the steering movement and feeling before each ride !
- FIRST RIDES: Start with the damper turned fully open (turn adjuster knob fully counter clockwise). Start adjusting in between rides with steps of MAX. 2 CLICKS (0.25 TURN) EACH TIME, untill the damper is working satisfactory for your riding style.
- NEVER USE MAXIMUM SETTING, ALWAYS OPEN AT LEAST 2 CLICKS (0.25 TURN).
- WARNING ! DAMPER HAS AN ACTIVE / SPEEDSENSITIVE DAMPING SYSTEM;
 - Steering with NORMAL MOVEMENT should be FREE !!
 - Steering with FAST MOVEMENT should be CONTROLLED BY DAMPER !!
- HYPERPRO uses a special seal to reduce friction. The seal uses an oil film to work properly. It is normal that some oil can appear on the pistonrod.
- Damper works with oil: DAMPING CAN BE HARDER AT LOWER TEMPERATURES!

Step 1: install the tank bracket assembly

Install the tank bracket using:

- Tank bracket assembly (1, 2, 3, 4, 5)
- Bolt M6x12 (5)
- Bolt M6x90 (6)
- 1x Washer M6 ϕ 12 (7)
- Lock nut M6 (8)
- Spacer M6 H3 (9)

Remove the 2 bolts from the brake hose bracket from the right side of the frame in front of the tank. **Check if the bolt M6x90 (6) can be fitted completely through the frame from the left hand side and is able to tighten the tank bracket assembly. If not, it is necessary to drill the upper M6 hole on the right hand side to ϕ 6 mm. Apply some grease or paint to prevent corrosion.**

Install the tank bracket assembly (1-5), using the M6x90 bolt (6) through the frame. Place spacer H3 (9) between frame and tank bracket and the M6 washer (7) and lock nut M6 (8) on top of the original brake hose clamp as shown in the picture on page 1. Use the M6x12 bolt (5) in the lower on the right side. Tighten the bolts to a torque of approx. 5-9Nm/44-80Lbs.In/4.0-6.4Lbs.Ft

Step 2: install the damper clamp

Install the damper clamp using:

- 1x Washer M6 ϕ 12 (7)
- 1x O-Ring (10)
- Damper Clamp (11)
- Bolt M6x25 Low head (12)

Use washer (7), O-ring (10) and bolt M6x25 L (12) to mount the damper clamp (11) to the tank bracket assembly as shown on page 1. Tighten the bolt with a torque of approx. 5-9Nm/44-80Lbs.In/4.0-6.4Lbs.Ft.

Step 3: install the fork bracket

Install the fork bracket using:

- 2x Spacer M8 H17 (13)
- 2x Bolt M8x55 Low head (14)
- Fork bracket (16)

Loosen and remove the original clamp bolts from the right hand handlebar clamp. Place the spacers (13) in the bolt holes and install the fork bracket (16) using the M8x55 bolts (14). Tighten the bolts evenly to a torque of approx. 14-17Nm/124-150Lbs.In/10.3-12.5Lbs.Ft.

Step 4: install the steering damper

Install the steering damper using:

- Bolt M8x35 Button head (15)
- Spacer M8 H4.5 (17)
- 1x O-ring (10)
- Steering damper, stroke 75 (18)
- Lock nut M8 (19)

Ensure that the clamp bolt (11a) of the damper clamp is loosened and pointing towards the tank. Shove the damper (18) with the knob-end first, through the clamp (11) untill the ball-joint can be mounted to the fork bracket (16). Use the spacer (17), O-ring (10), M8 bolt (15) and nut (19) in the correct order. Tighten bot and nut to a torque of approx. 14-17Nm/124-150Lbs.In/10.3-12.5Lbs.Ft. Position the damper tube untill the distance "X" stated on page 1 is reached, then tighten the M6 clamp bolt (11a) to a torque of approx. 6Nm/53Lbs.In/4.4Lbs.Ft. Check if the damper is level horizontally and aligned to the bike. Check if the damper does not touch anything (e.g. tank) when steering from left to right. Check if the bike can make it's full steering angle from left to right.