

# HYPHERPRO

## STEERING DAMPER MOUNTING KIT

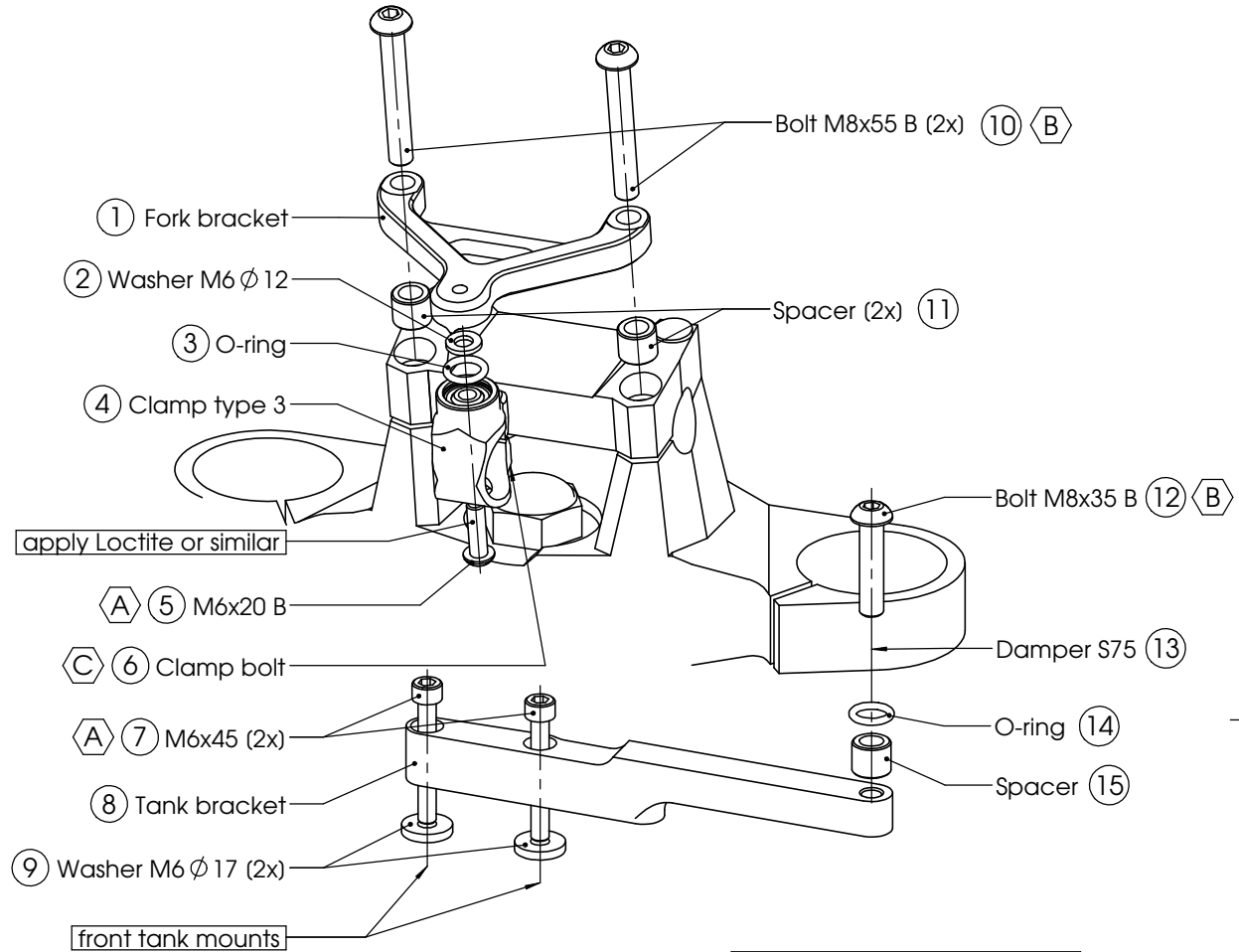
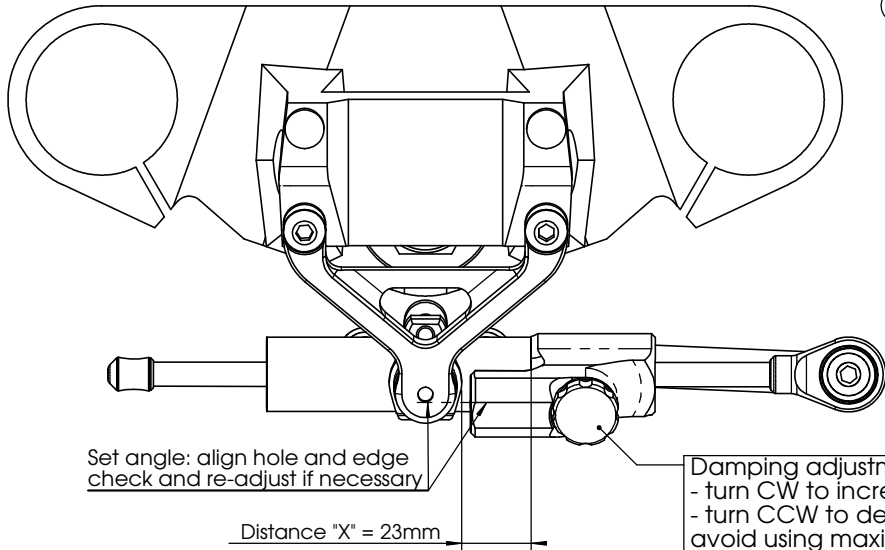
for

**Honda CB 1000 R**  
**Model '08-'10 & '11->**

### MK-HO10-T008 PART LIST

SD stroke 75	1	M8x55 Button head	2
Tube Clamp TYPE 3	1	Washer M6 $\phi$ 12	1
O-Ring	2	Washer M6 $\phi$ 17 h3	2
Fork Bracket (MP-FOMK77A)	1	Spacer D13d8.2L11 (MP-SP081311)	3
Tank Bracket (MP-TAMK67A)	1	-	-
M6x20 Button head	1	-	-
M6x45	2	-	-
M8x35 Button head	1	-	-

ALL IDEAS, DESIGNS ARRANGEMENTS AND PLANS INDICATED OR REPRESENTED BY THIS DRAWING ARE OWNED BY HYPERPRO AND WERE CREATED, EVOLVED AND DEVELOPED FOR USE ON AND IN CONNECTION WITH THE SPECIFIC PROJECT. NONE SUCH IDEAS, DESIGNS, ARRANGEMENTS OR PLANS SHALL BE USED BY OR DISCLOSED TO ANY PERSON, FIRM OR CORPORATION FOR ANY PURPOSE WHATSOEVER WITHOUT THE WRITTEN PERMISSION OF HYPERPRO.



* TORQUES	
A: 5-9Nm / 44-80Lbs.In / 4.0-6.4Lbs.Ft	D: 8Nm / 70Lbs.In / 5.9Lbs.Ft
B: 14-17Nm / 124-150Lbs.In / 10.3-12.5Lbs.Ft	E: 55Nm / 486Lbs.In / 40Lbs.Ft
C: 6Nm / 53Lbs.In / 4.4Lbs.Ft	F: Factory torque (see owners manual)

# HYPERPRO

## STEERING DAMPER MOUNTING KIT

for

**Honda CB 1000 R**  
**Model '08-'10 & '11->**

### **MK-HO10-T008 INSTALLATION INSTRUCTIONS**

#### **In general:**

HYPERPRO can not be held responsible in any way for any form of physical, material, financial or other damage arising from use, assembly or overhaul of HYPERPRO products. HYPERPRO reserves the right to make changes without prior notice.

This product is ONLY TO BE INSTALLED BY A PROFESSIONAL MECHANIC.

This product is only to be used for the motorcycle brand, model and year stated specifically on top of the pages of this manual.

DO NOT attempt to install this product on motorcycles from any different brand, model and/or year than stated on the pages of this manual.

DO NOT use this kit for cars, boats, jet-skies, snowmobiles, ATV's, aircraft, hovercrafts or any other vehicle and/or purpose.

HYPERPRO steering dampers are FOR RACE USE ONLY, NOT FOR HIGHWAY USE!

#### **Before installation:**

- Please read the entire manual carefully before starting the installation!
- Check if you have all the tools required. Good tools are a must.
- Protect your bike at the most important places in and around the work area (e.g. tank, fairing, frame, etc.), with a blanket, towel or similar.

#### **During installation:**

- Check all operations and parts carefully before, during and after performing each step.
- Clean all surfaces that are required for fitting parts together or for applying self adhesives or loctite, thoroughly with contact cleaner or another degreaser, unless otherwise stated.
- Be careful not to damage or scratch any part of your bike.
- ALWAYS work relaxed and concentrated!! It is very easy to damage something or make a mistake.

#### **After installation:**

- Check and make sure that there is no contact between any part of the steering damper kit and any part of the motorcycle. The kit should not hit anything. Steering movement should not be limited by the steering damper. If the steering movement is limited, adjust the position of the tube in the clamp until steering movement is normal again. Do not forget to tighten the clamp bolt again!
- ALWAYS check the steering movement and feeling before each ride !
- FIRST RIDES: Start with the damper turned fully open (turn adjuster knob fully counter clockwise). Start adjusting in between rides with steps of MAX. 2 CLICKS (0.25 TURN) EACH TIME, until the damper is working satisfactory for your riding style.
- NEVER USE MAXIMUM SETTING, ALWAYS OPEN AT LEAST 2 CLICKS (0.25 TURN).
- WARNING ! DAMPER HAS AN ACTIVE / SPEEDSENSITIVE DAMPING SYSTEM;
  - Steering with NORMAL MOVEMENT should be FREE !!
  - Steering with FAST MOVEMENT should be CONTROLLED BY DAMPER !!
- HYPERPRO uses a special seal to reduce friction. The seal uses an oil film to work properly. It is normal that some oil can appear on the pistonrod.
- Damper works with oil: DAMPING CAN BE HARDER AT LOWER TEMPERATURES!

#### **Step 1: installing the tank bracket**

Install the tank bracket using:

- 2x Bolt M6x45 (7)
- Tank bracket (8)
- 2x Washer M6  $\varnothing$  17 (9)

Remove the 2 standard M6 bolts and washers from the front tank mounting points. Install the tank bracket (8), using the 2 supplied M6x45 bolts (7), place only the supplied M6 washers (9) underneath the bracket for support as shown in the right picture on page 1. Tighten the bolts with a torque of approx. 5-9Nm/44-80Lbs.In/4.0-6.4Lbs.Ft

Check the clearance between the bracket and the right fork cap at full steering lock. Rotate the forkleg in the triple clamps if necessary, as shown on page 1.

#### **Step 2: fork bracket pre-assembly**

Pre-assemble the fork bracket using:

- Fork bracket (1)
- Washer M6  $\varnothing$  12 (2)
- 1x O-Ring (3)
- Clamp type 3 (4)
- Bolt M6x20 Button head (5)

Put the assembly together as shown on page 1: Use the M6x20 bolt (5) (apply Loctite or similar) to fit the washer (2), O-ring (3) and the clamp (4) to the bottom of the fork bracket (1). Tighten the bolt with a torque of approx. 5-9Nm/44-80Lbs.In/4.0-6.4Lbs.Ft.

#### **Step 3: installing the fork assembly**

Install the fork bracket pre-assembly using:

- Fork bracket pre-assembly (see step 2)
- 2x Bolt M8x55 (10)
- 2x Spacer D13.5 d8.2 L10.3 (11)

Remove the original plastic caps and M8 bolts from the handlebar clamp. Place the spacers (11) in the holes. Install the fork bracket assembly using the M8x55 bolts (10). Tighten the bolts with a torque of approx. 14-17Nm/124-150Lbs.In/10.3-12.5Lbs.Ft.

#### **Step 4: installing the steering damper**

Install the steering damper using:

- Bolt M8x35 button head (12)
- Steering damper, stroke 75 (13)
- 1x O-ring (14)
- Spacer type 1 (15)

Ensure that the clamp bolt (6) of the damper clamp (5) is pointing forward. Shove the damper (13), with the knob-end first, through the clamp until the ball-joint can be fitted to the tank bracket (8). Use the Spacer (15), O-ring (14) and M8 bolt (12) to fit the ball-joint to the tank bracket (8) and tighten with a torque of approx. 14-17Nm/124-150Lbs.In/10.3-12.5Lbs.Ft. Position the damper tube until the distance "X" stated on page 1 is reached, then turn the handlebars fully to the left and tighten the M6 clamp bolt (5a) with a torque of approx. 6Nm/53Lbs.In/4.4Lbs.Ft. Check if the damper is level horizontally and aligned to the bike. Check if the damper does not touch anything (e.g. fork bracket or tank) when steering from left to right. Check if the bike can make it's full steering angle from left to right. Adjust distance X if necessary to improve.