

HYPERS

STEERING DAMPER MOUNTING KIT

for

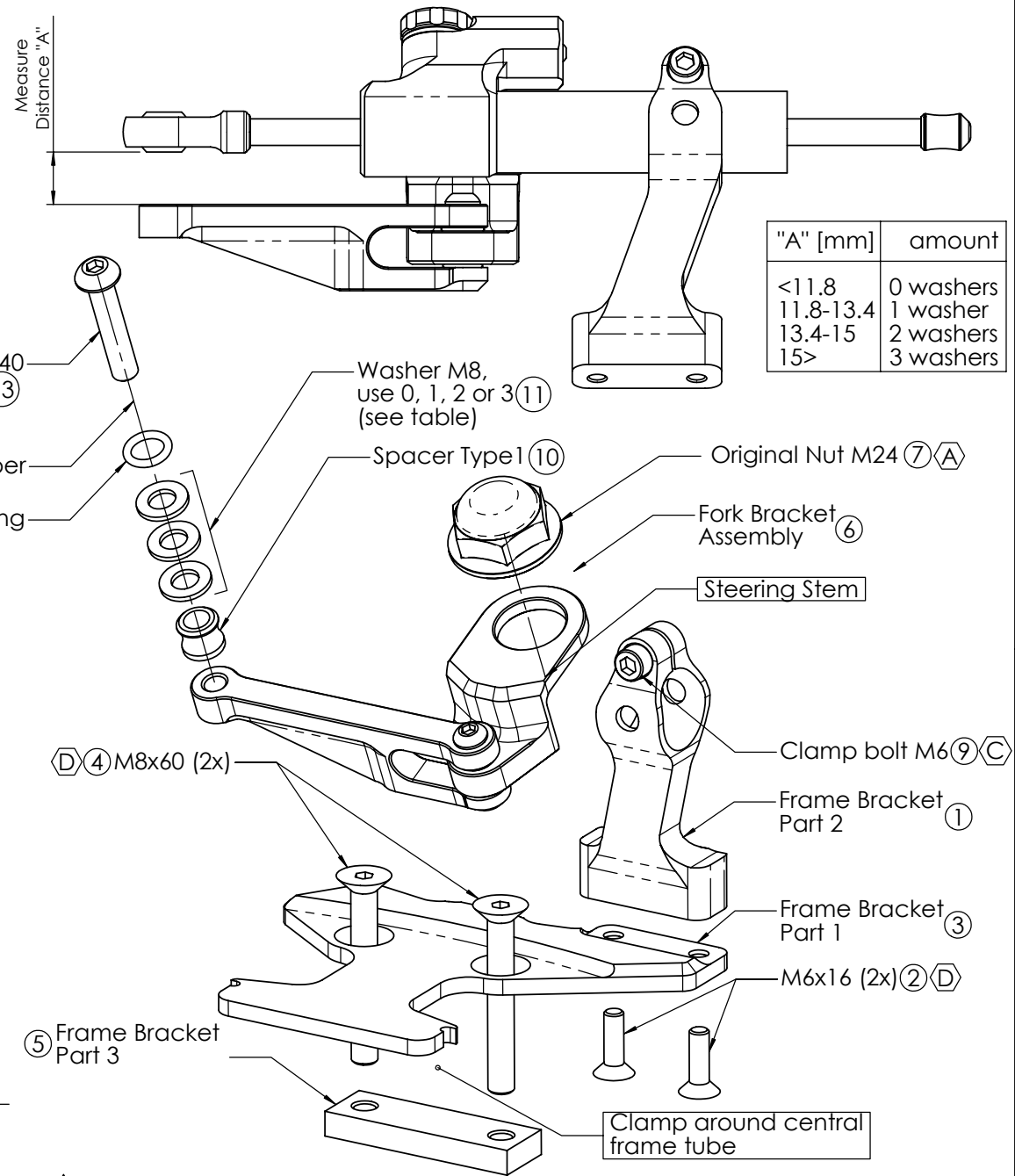
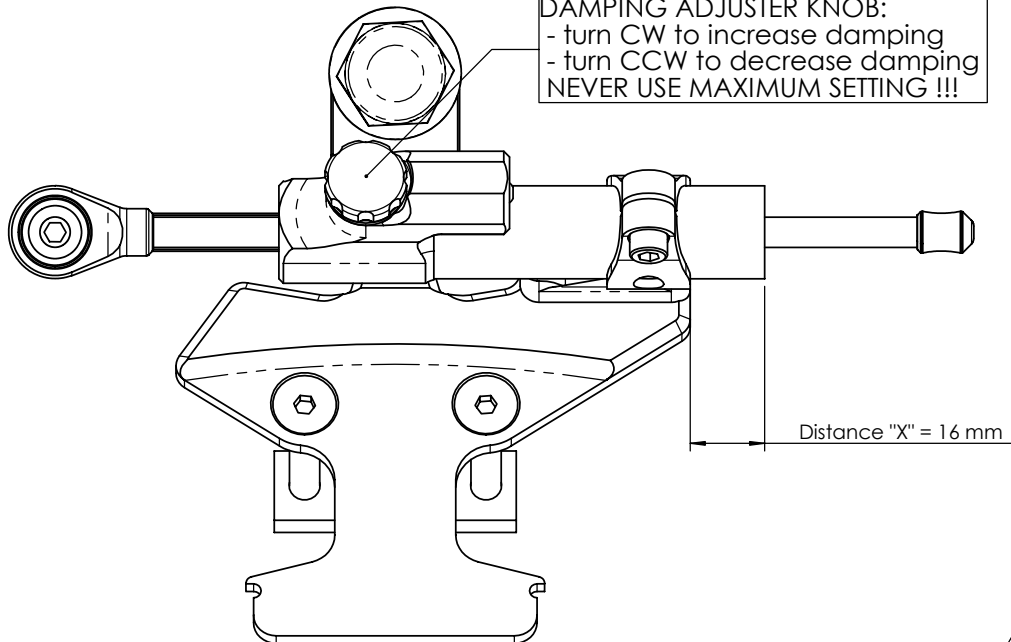
YAMAHA VMX1200 V-max Model 1985 ->

MK-YA12-T002 PART LIST

SD stroke 75	1	M8x60 Countersunk	2
Fork Bracket Assy	1	Washer M8Ø16	3
Frame Bracket Pt.1	1	O-Ring	1
Frame Bracket Pt.2	1	-	-
Frame Bracket Pt.3	1	-	-
Spacer Type 1	1	-	-
M6x16 Countersunk	2	-	-
M8x40 Button head	1	-	-

ALL IDEAS, DESIGNS ARRANGEMENTS AND PLANS INDICATED OR REPRESENTED BY THIS DRAWING ARE OWNED BY HYPERPRO AND WERE CREATED, EVOLVED AND DEVELOPED FOR USE ON AND IN CONNECTION WITH THE SPECIFIC PROJECT. NONE SUCH IDEAS, DESIGNS, ARRANGEMENTS OR PLANS SHALL BE USED BY OR DISCLOSED TO ANY PERSON, FIRM OR CORPORATION FOR ANY PURPOSE WHATSOEVER WITHOUT THE WRITTEN PERMISSION OF HYPERPRO.

DAMPING ADJUSTER KNOB:
 - turn CW to increase damping
 - turn CCW to decrease damping
 NEVER USE MAXIMUM SETTING !!!



"A" [mm]	amount
<11.8	0 washers
11.8-13.4	1 washer
13.4-15	2 washers
15>	3 washers

(A)	55-75Nm / 486-663Lbs.In / 40-55Lbs.Ft	(C)	6Nm / 53Lbs.In / 4.4Lbs.Ft
(B)	14-17Nm / 124-150Lbs.In / 10.3-12.5Lbs.Ft	(D)	5-9Nm / 44-80Lbs.In / 4.0-6.4Lbs.Ft

HYPERPRO

STEERING DAMPER MOUNTING KIT

for

YAMAHA VMX1200 V-max Model 1985 ->

MK-YA12-T002 INSTALLATION INSTRUCTIONS

In general:

HYPERPRO can not be held responsible in any way for any form of physical, material, financial or other damage arising from use, assembly or overhaul of HYPERPRO products. HYPERPRO reserves the right to make changes without prior notice.

This product is ONLY TO BE INSTALLED BY A PROFESSIONAL MECHANIC.

This product is only to be used for the motorcycle brand, model and year stated specifically on top of the pages of this manual.

DO NOT attempt to install this product on motorcycles from any different brand, model and/or year than stated on the pages of this manual.

DO NOT use this kit for cars, boats, jet-skis, snowmobiles, ATV's, aircraft, hovercrafts or any other vehicle and/or purpose.

HYPERPRO steering dampers are FOR RACE USE ONLY, NOT FOR HIGHWAY USE!

Before installation:

- Please read the entire manual carefully before starting the installation!
- Check if you have all the tools required. Good tools are a must.
- Protect your bike at the most important places in and around the work area (e.g. tank, fairing, frame, etc.), with a blanket, towel or similar.

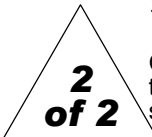
During installation:

- Check all operations and parts carefully before, during and after performing each step.
- Clean all surfaces that are required for fitting parts together or for applying self adhesives or loctite, thoroughly with contact cleaner or another degreaser, unless otherwise stated.
- Be careful not to damage or scratch any part of your bike.
- ALWAYS work relaxed and concentrated!! It is very easy to damage something or make a mistake.

After installation:

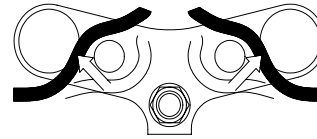
- Check and make sure that there is no contact between any part of the steering damper kit and any part of the motorcycle. The kit should not hit anything. Steering movement should not be limited by the steering damper. If the steering movement is limited, adjust the position of the tube in the clamp until steering movement is normal again. Do not forget to tighten the clamp bolt again!
- ALWAYS check the steering movement and feeling before each ride!
- FIRST RIDES: Start with the damper turned fully open (turn adjuster knob fully counter clockwise).
- Start adjusting in between rides with steps of MAX. 2 CLICKS (0.25 TURN) EACH TIME, until the damper is working satisfactory for your riding style.
- NEVER USE MAXIMUM SETTING, ALWAYS OPEN AT LEAST 2 CLICKS (0.25 TURN).

- WARNING ! DAMPER HAS AN ACTIVE / SPEEDSENSITIVE DAMPING SYSTEM;
 - Steering with NORMAL MOVEMENT should be FREE !!
 - Steering with FAST MOVEMENT should be CONTROLLED BY DAMPER !!
- HYPERPRO uses a special seal to reduce friction. The seal uses an oil film to work properly. It is normal that some oil can appear on the pistonrod.
- Damper works with oil: DAMPING CAN BE HARDER AT LOWER TEMPERATURES!



See WWW.HYPERPRO.COM for the latest pictures, modifications, specs. and e-drawings of this steering damper kit.

Step 1: Move electrical wiring of handlebar

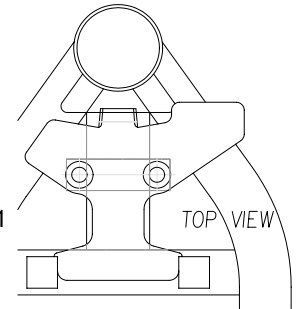


To make more room for the steering damper, move the electrical cables of the handlebars. Remove the handlebars and all other necessary parts and move the cables to the front of the handlebar mounts on the top yoke.

Step 2: installing the tank bracket

- Frame bracket pt.1 (3)
- Frame bracket pt.2 (1)
- Frame bracket pt.3 (5)
- 2x Bolt M6x16 Counter sunk (2)
- 2x Bolt M8x60 Counter sunk (4)

Pre-assemble the tank bracket; place bracket part 2 (1) on top of part 1 and bolt them together with 2x M6x16 counter sunk bolts (2) as shown in the picture on page 1. Tighten the bolts with a torque of approx. 5-9Nm/44-80Lbs.In/4.0-6.4Lbs.Ft



Remove the fake tank cap, the top of the air filter box and the instrument panel from the top of the frame. Place the tank bracket assembly correctly on top of the frame. The front notch has to be placed in the hole behind the steering head. The rear part of the tank bracket has to be placed between the 2 mounting points of the instrument panel. Use the 2 M8x60 countersunk bolts (4) and the steel strip (5) to clamp the tank bracket assembly to the central frame tube.

Step 3: installing the fork bracket assembly

- Fork bracket assembly (6)

Loosen and remove the steering stem nut (7), using a 27mm key. Place the assembly (6) over the thread. Replace the nut (7) on top of the fork clamp and tighten carefully with a torque of approx. 55-75Nm/486-663Lbs.In/40-55Lbs.Ft.

Step 4: installing the steering damper

- Steering damper (8)
- Spacer Type 1 (10)
- Washers M8Ø16 (11)
- 1x O-ring (12)
- Bolt M8x40 button head (13)

Shove the damper (8), with the end knob-side first, through the clamp until the distance "X" (=16mm) stated on page 1 is reached, then tighten the M6 clamp bolt (9) with a torque of approximately 6Nm/53Lbs.In/4.4Lbs.Ft. Align the M8 hole in the fork bracket with the damper ball-joint and measure distance "A". Compare the value with the table and use the correct amount of washers. Use the spacer (10), washers (11), O-ring (12) and M8 bolt (13) to fixate the balljoint to the fork bracket and tighten with a torque of approx. 14-17Nm/124-150Lbs.In/10.3-12.5Lbs.Ft.

Check if the damper is level horizontally and aligned to the bike. Check if the damper does not touch anything (e.g. tank) when steering from left to right. Check if the bike can make its full steering angle from left to right and adjust if necessary.