

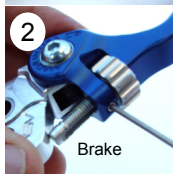
ASV Dirt Adjust Wheel Replacement Instructions

Thank you for purchasing ASV Dirt wheel adjusters for your ASV Dirt levers. These wheels will fit all models of ASV Dirt levers. These wheels will not fit onto any other ASV levers such as our Sport Levers. This replacement can be done with the levers mounted on, or off the motorcycle. It is recommended to do this while the lever is installed because the pivot spring tension can be difficult to hold by hand.

Tools needed:
2mm or 5/64" Allen / Hex wrench
Thread locking solution
(Loctite), lightweight grease

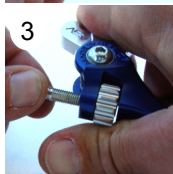
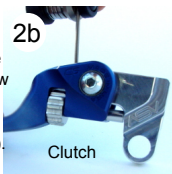


1) Open your lever and adjust the reach all the way out so that the push shaft is extended as far as it can go (photo 1).



2) Use a 2mm or 5/64" Allen / hex wrench to remove the retaining screw

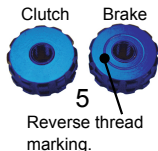
(Brake - photo 2, Clutch - photo 2b).



3) Unscrew the push shaft the rest of the way. Hold the adjust wheel in place as, once the push shaft is removed, it will eject from the lever by the detent spring and bearing inside the lever (photo 3).



4) Carefully remove the old adjust wheel. There is a spring and bearing inside the lever that will fall out when you remove the wheel (photo 4).



5) Choose the correct replacement wheel to install. The clutch and brake use different wheels. Your clutch uses a standard thread direction and your brake uses a reverse thread direction. You can identify the brake wheel by an engraved circle (photo 5). The circle is only on one side of the wheel.

6) Before you place the correct adjust wheel back into your lever, reinstall the spring and bearing into the small hole located inside the slot where your wheel is housed (photo 6).

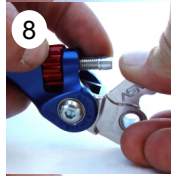


It is recommended that you place a dab of grease into the threaded hole of the adjust shaft.

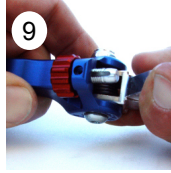
7) Carefully place the adjust wheel into the lever. You will need to apply some downward pressure on the adjust wheel against the spring to get the wheel to line up with the hole for the threaded push shaft to go through (photo 7).



8) While holding the thumbwheel in place, insert the push shaft and begin threading it into the adjust wheel. Thread it in until approx. 3/8 of the push shaft remains exposed. You can also hold the shaft and spin your adjust wheel to accomplish this (photo 8).



9) Before you re-install the retaining screw, be sure the slot on your push shaft is aligned with it (photo 9).



10) Install your retaining screw. It is highly recommended that you use a mild thread-locking solution such as blue Loctite. Screw should be tight, but be careful not to over-tighten it (photo 10).



Test your new adjust wheels by adjusting your lever all the way in, and all the way out. This will also help your new wheel threads to properly break into the push shaft threads. If there is any binding or difficulty to adjust your wheels, try spraying a light lubricant on the push shaft threads and turning the wheels in and out to break the threads in. If your wheels are installed correctly, both your clutch and brake lever will adjust outward by rolling the adjust wheel forward from the top of the lever. If you have any questions or concerns, please contact ASV Inventions, Inc. tech support at 1-877-278-7000.